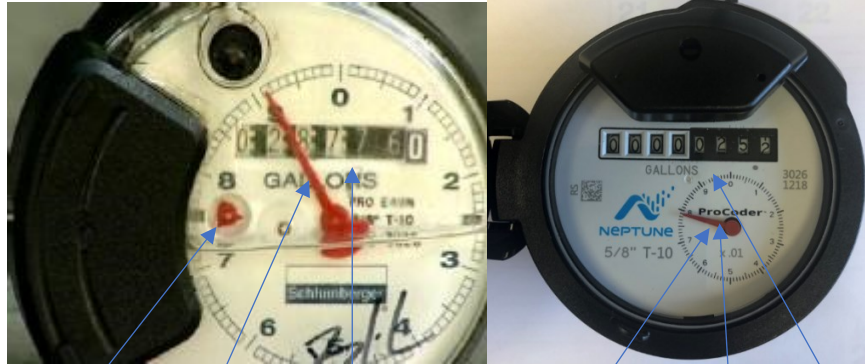


Meet Your Meter Face



Leak Indicator Sweep Hand Reading

Leak Indicator Sweep Hand Reading

- **Sweep Hand**- When the sweep hand makes one complete turn from zero to zero your meter has recorded 10 gallons.
- **Reading**- The sweep hand signifies the stationary zero on the reading. The white numbers with black backgrounds are hundreds, and the black numbers with white backgrounds are the thousands. Ex. The reading on the meter above is 287,769
- **Leak Indicator**- The leak indicator will turn much faster than the sweep hand making it easier to detect a leak in your system.

Do I have a leak?

-If you notice that you have a high usage, locate your water meter. Make sure that everything is turned off including your faucets, showers, washing machines. Make sure that your toilets aren't running. Lift the lid and locate your meter face. If the leak indicator is turning, you have a leak. (You may have to watch the leak indicator for several minutes.)

-Once you determine that you have a leak, if you will go inside your home and locate your *main line shut-off valve*, (which should be located somewhere around the hot water heater) and turn it off then you can begin to search for your leak. Once the valve is turned off go out to your meter and check the leak indicator. If it is turning then your leak is between your meter and your home, (basically outside of your house.) If the leak indicator has stopped turning then the leak is inside your home.

-Finding a leak outside of your home?

Most of the time a leak will be where you have a fitting or a connection. If you know where your connections are located, check the area for the ground being wet.

-Ideas for leaks inside your home

1. Water tank on the commode
2. Water heater filling or leaking
3. Dripping faucets in tub, shower, lavatory, sink, etc.
4. Relief valve on water heater open or seeping
5. Outside faucet open or dripping
6. Washer or dishwasher feed valve open or seeping
7. Hose in yard turned on or leaking
8. Unknown lines in yard or to other outlets
9. Leaking pipes or fitting in house or in line between the meter and house
10. Swimming pool, fountain, etc.
11. Water to air conditioning cooling tower running or leaking
12. Any equipment connected to water lines